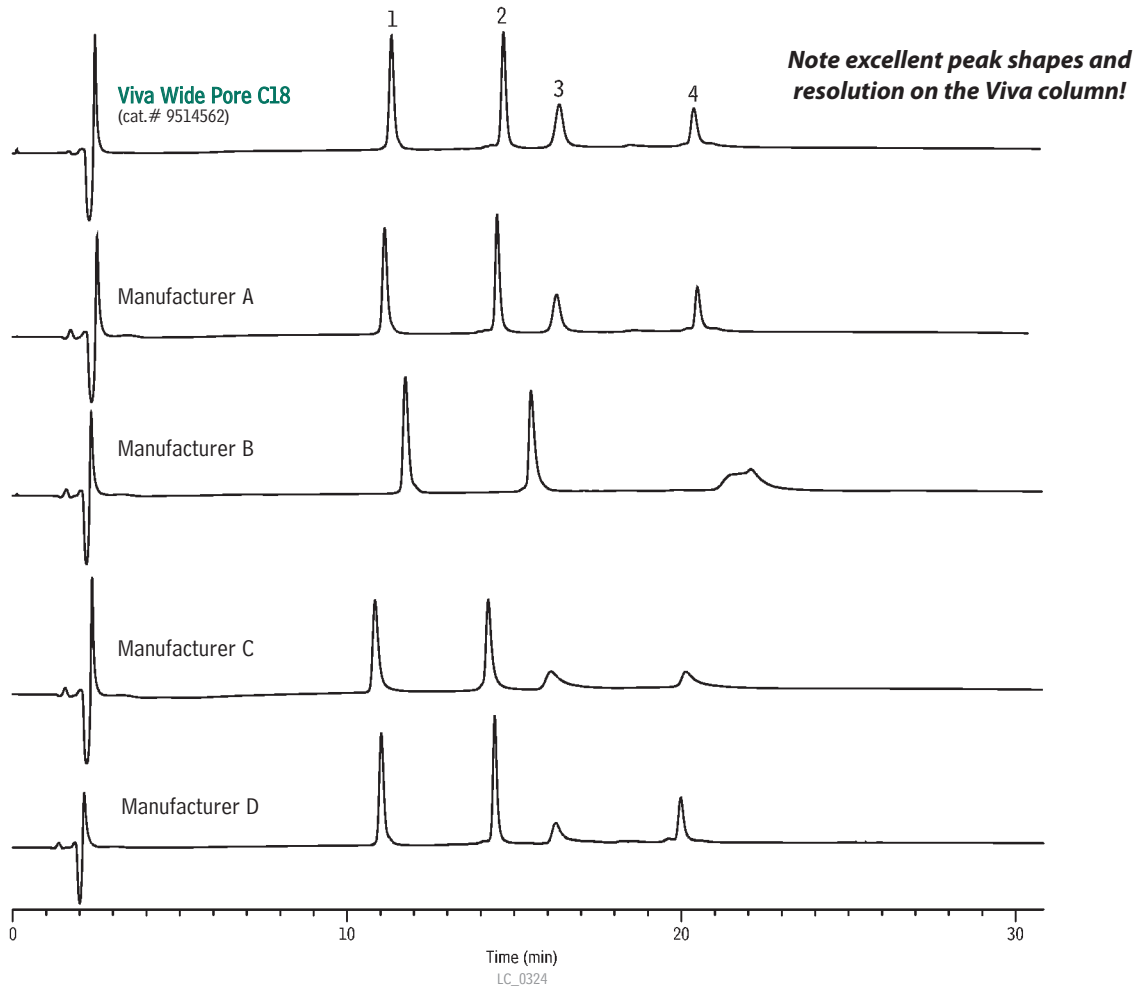


**Protein Mix on  
Viva C18**

Peak List	Ret. Time (min.)
1. ribonuclease A	11.31
2. cytochrome c	14.65
3. holo-transferrin	16.32
4. apomyoglobin	20.34



**Sample:**

Inj.: 20µL  
 Conc.: 0.08mg/mL each protein  
 Sample diluent: 0.10% TFA in water / 0.10%  
 TFA in acetonitrile, 80:20, v/v  
 Sample temp.: 25°C

**Columns: Wide Pore C18**

Dimensions: 150 x 2.1 mm  
 Particle size: 5µm  
 Pore size: 300Å

**Conditions:**

Mobile phase: A: 0.10% TFA in water,  
 B: 0.10% TFA in acetonitrile,  
 20% B to 70% B in 30 min.  
 Flow: 0.20mL/min.  
 Temp.: 25°C (or ambient)  
 Det.: UV @ 214nm