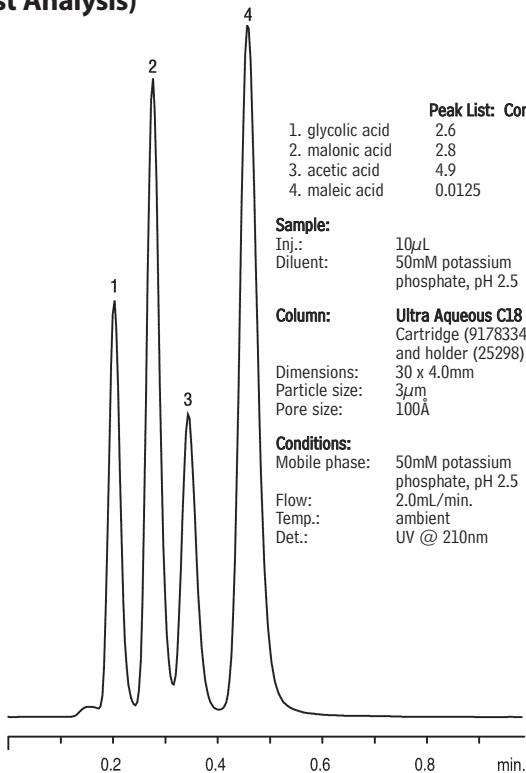


# Carboxylic Acids on Ultra Aqueous C18 (Fast Analysis)



## Peak List: Conc. (mg/ml)

1. glycolic acid	2.6
2. malonic acid	2.8
3. acetic acid	4.9
4. maleic acid	0.0125

## Sample:

Inj.: 10 $\mu$ L  
Diluent: 50mM potassium phosphate, pH 2.5

## Column:

**Ultra Aqueous C18** Fast LC  
Cartridge (91783340)  
and holder (25298)

Dimensions: 30 x 4.0mm  
Particle size: 3 $\mu$ m  
Pore size: 100 $\text{\AA}$

## Conditions:

Mobile phase: 50mM potassium phosphate, pH 2.5  
Flow: 2.0mL/min.  
Temp.: ambient  
Det.: UV @ 210nm

LC\_0306