

In 2007, pet foods imported from China caused serious illnesses or deaths in a large number of cats and dogs. US Food and Drug Administration reported that melamine was found in the pet foods as well as in urine of affected animals. Moreover, in 2008, milk and infant formula adulterated with melamine caused kidney stones and other renal failure, especially among young children.

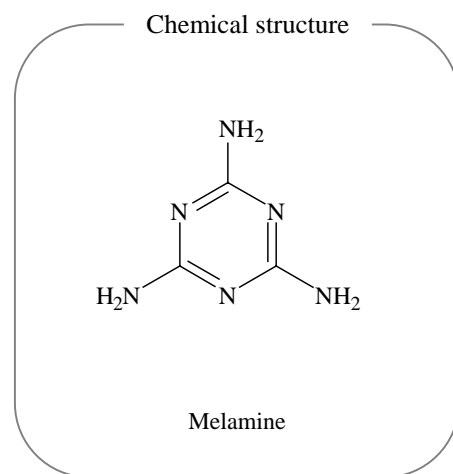
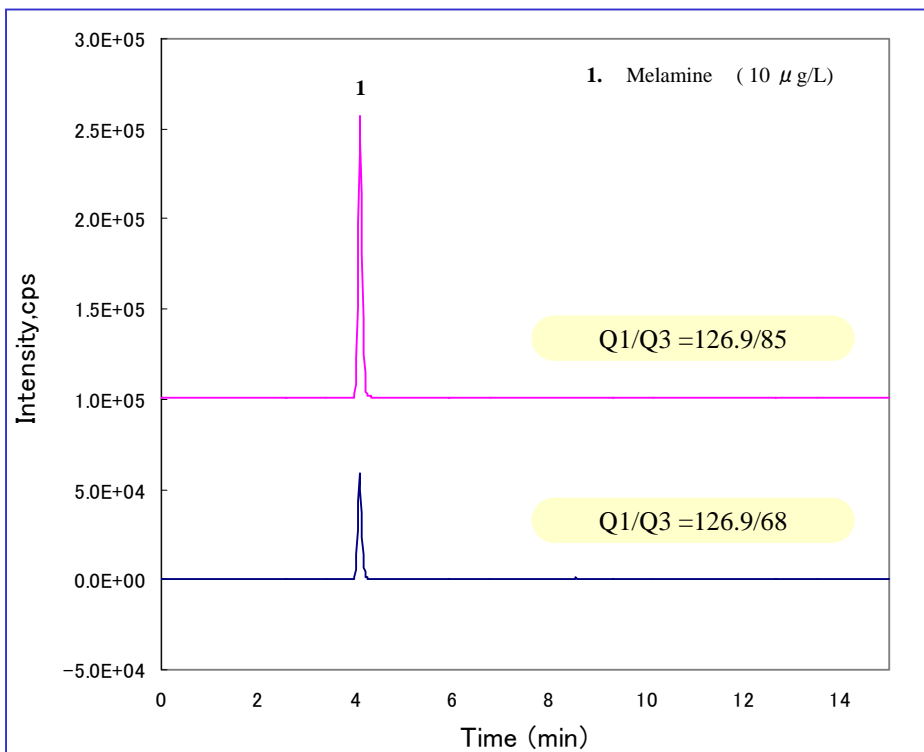
Since melamine is very hydrophilic compound, it is

difficult to retain and analyze melamine using ODS columns. It is also undesirable to use ion-pair reagents because the sensitivity is reduced in LC/MS/MS detection.

In this note, Inertsil HILIC (hydrophilic interaction chromatography) was used as a separation column. Melamine was successfully retained and determined with good linearity.

(K.Suzuki)

A chromatogram obtained from standard solution



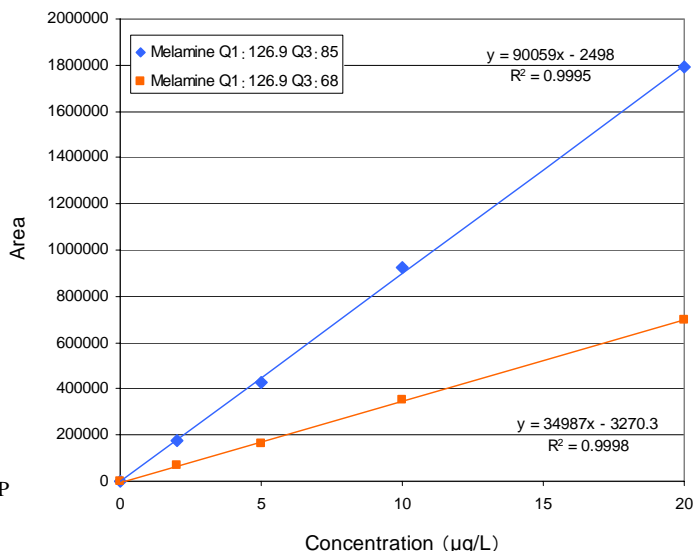
HPLC Conditions

System : LC800
Column : Inertsil HILIC (5 µm, 150 x 3.0 mm I.D.)
 Cat.No. 5020-07715
Eluents : A) CH₃CN
 B) 10 mM ammonium acetate
 A / B = 85 / 15 — 0.5 min — 85 / 15 — 6.5 min — 50 / 50
 (equilibration for 8 min), v/v
Flow rate : 0.5 mL/min
Col. Temp. : 40 °C
Detection : MRM (SRM)
Inj. Vol. : 5 µL

MS/MS(MRM) Conditions

System : API-4000 Q TRAP (Applied Biosystems Japan Ltd.)
Detection : Compound Q1 Q3 DP EP CE CXP
 Melamine 126.9 85 41 10 27 14
 126.9 68 41 10 41 10

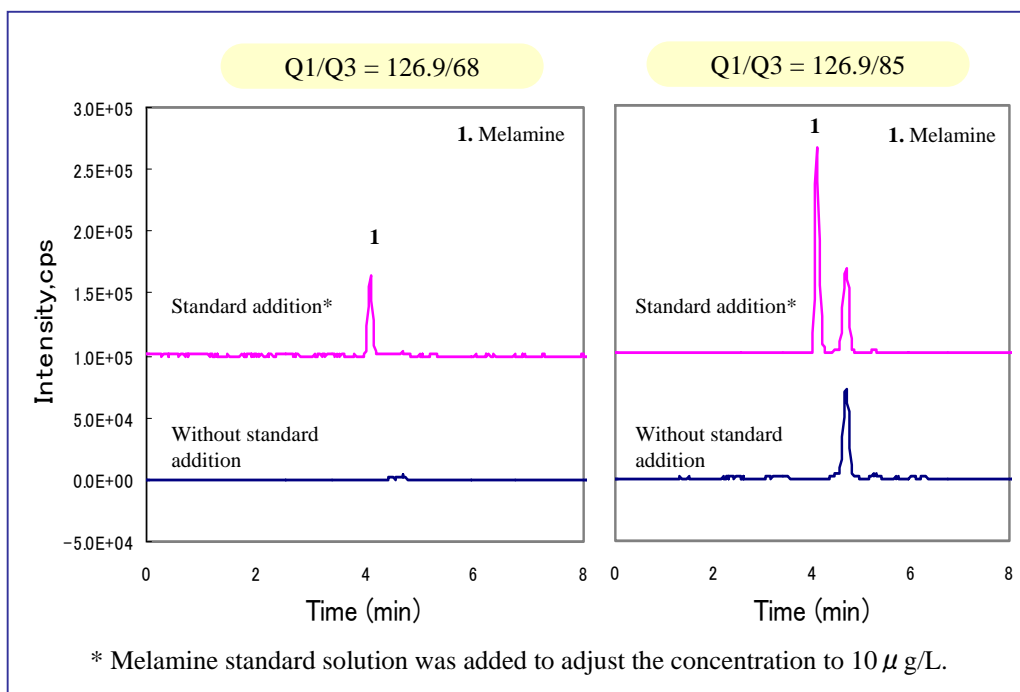
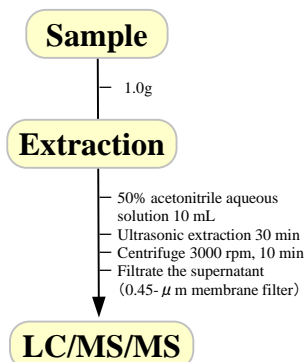
Ion source	ESI (Posi)	CUR	CAD	IS	TEM	GS1	GS2	the on
		10	8	5500	700	60	30	



The calibration curves for melamine

Analysis of powdered milk

An example of sample pretreatment

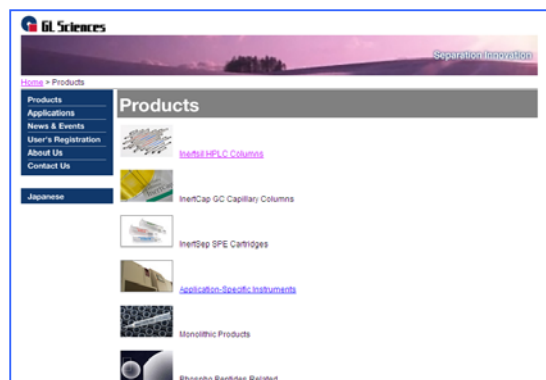


Visit our Website on

<http://www.glsciences.com/>

<http://www.inertsil.com/>

GL Sciences also offers an extensive range of GC and LC consumables.



Contact us

GL Sciences, Inc. Japan

22-1 Nishishinjuku 6-chome, Shinjuku-ku, Tokyo, 163-1130 Japan

TEL: +81-3 (5323)6620 FAX: +81-3 (5323)6621

GL Sciences, Inc. USA

4733 Torrance Blvd. Ste 255, Torrance, CA 90503

Tel: (310)265-4424 FAX (310)265-4425

Distributors Outside of Japan and USA

GL Sciences uses distributors in many countries.

You can find a local distributor in your country in the following url.

<http://www.glsciences.com/products/contact.html>

E-MAIL: world@glsc.co.jp

