

Analysis of Glyphosate by HPLC with pre-column derivatization

Glyphosate (*N*-(phosphonomethyl)-glycine) is an effective herbicide in killing a wide variety of plants. This note describes a determination method for glyphosate using an HPLC system.

In Japan, 2 mg/L is set as the target value and two determination methods are described in an ordinance from Ministry of Health, Labour, and Welfare concerning water quality standard for tap water. In conformity with one of them, 9-fluorenylmethyloxy-carbonyl chloride (FMOCl) was used as a pre-column derivatization reagent in this note.

As well as glyphosate, aminomethylphosphonic acid (AMPA), which is its major metabolite, should be simultaneously determined because it is described in the ordinance that concentration of AMPA has to be added to that of glyphosate.

In the quality control of Japanese pesticide analysis, the coefficient of variation (C.V.) at one-hundredth concentration of the target value is required to be less than 20%. In this note, C.V. values even at one-thousandth concentration of the target value were examined.

Chromatograms at one-hundredth of the target value

Good separation between FMOCl-Glyphosate and FMOCl-AMPA was achieved by adjusting acetonitrile concentration in mobile phase. After the derivatives were detected, the acetonitrile concentration was increased to elute other compounds, such as unreacted derivatization reagent, more rapidly from separation column. As a result, injection-to-injection cycle time was shortened to 30 min. **The C.V. value at one-hundredth concentration of the target value was 0.6% (n=5) for each analyte, which shows excellent reproducibility of this method.**

An example of the sample pretreatment

Sample water

10 mL

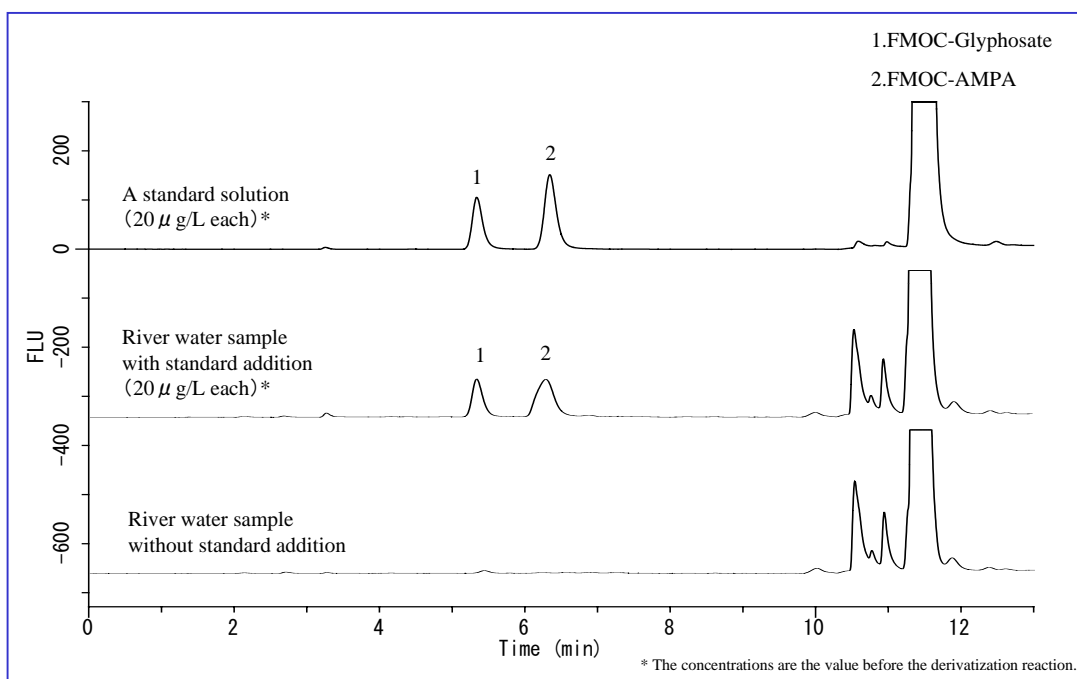
Derivatization

Borate buffer 0.5 mL
FMOCl solution 2.6 mL
Shaking for 5 min
Wait for 30 min

Liquid-liquid extraction

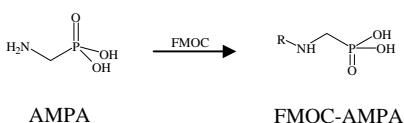
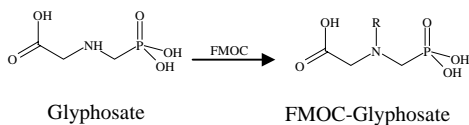
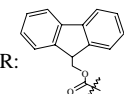
Ethyl acetate 5 mL
Shaking for 5 min
Discard the organic layer
Inject the aqueous layer into the HPLC system

HPLC-FL



A scheme of derivatization reaction

Derivatization reagent
FMOCl: R-Cl



HPLC conditions

Column : Inertsil ODS-3
(4 µm, 150 x 4.6 mm I.D.)
Cat.No. 5020-04645

Eluent : A) CH₃CN
B) 50 mM phosphate buffer*
A / B = 35 / 65 (8.5 min Hold),
70 / 30 (3.0 min Hold), (v/v)

Flow rate : 0.7 mL/min

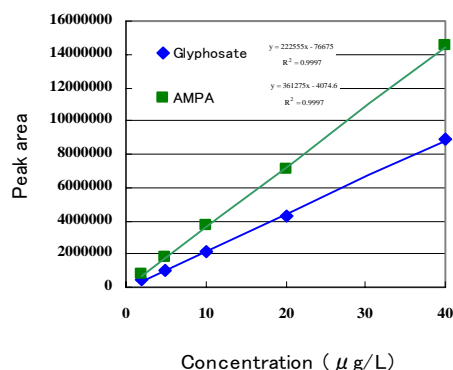
Col. Temp. : 40°C

Detection : FL Ex. 270nm, Em. 315nm

Inj. Vol. : 10 µL

* 50 mM phosphate buffer :

6.8 g of potassium dihydrogen phosphate was dissolved in 1 L of water, and the pH value was adjusted to 2.5 by adding phosphoric acid.

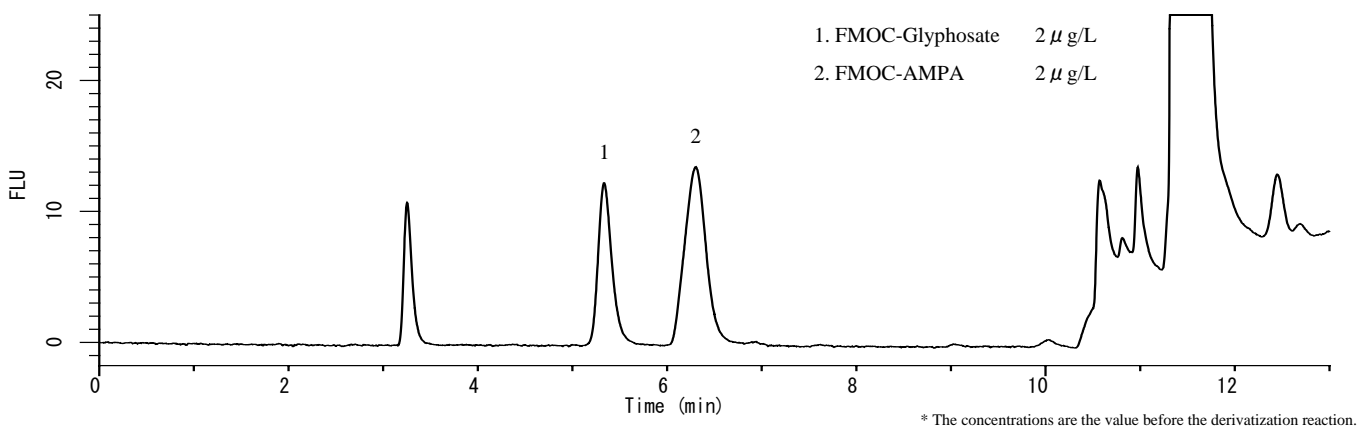


The calibration curves*

* The peak areas were obtained by derivatizing arbitrarily-diluted standard solutions.

A chromatogram at one-thousandth of the target value

C.V. values of peak area were obtained even with 10-fold lower concentration of standard solution than the concentration at which reproducibility should be examined in the quality control of Japanese pesticide analysis. **As a result, both values (9.6% for glyphosate, and 6.2% for AMPA, respectively) were lower than 20%, which represents good precision of this method even at the quite low concentration.**

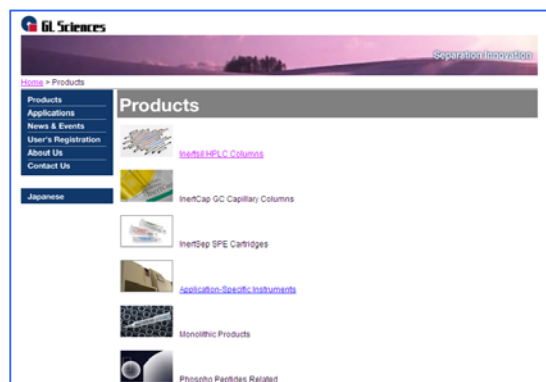


Visit our Website on

<http://www.glsciences.com/>

<http://www.inertsil.com/>

GL Sciences also offers an extensive range of GC and LC consumables.



Contact us

GL Sciences, Inc. Japan

22-1 Nishishinjuku 6-chome, Shinjuku-ku, Tokyo, 163-1130 Japan

TEL: +81-3 (5323)6620 FAX: +81-3 (5323)6621

GL Sciences, Inc. USA

4733 Torrance Blvd. Ste 255, Torrance, CA 90503

Tel: (310)265-4424 FAX (310)265-4425

Distributors Outside of Japan and USA

GL Sciences uses distributors in many countries.

You can find a local distributor in your country in the following url.

<http://www.glsciences.com/products/contact.html>

E-MAIL: world@gl.co.jp

