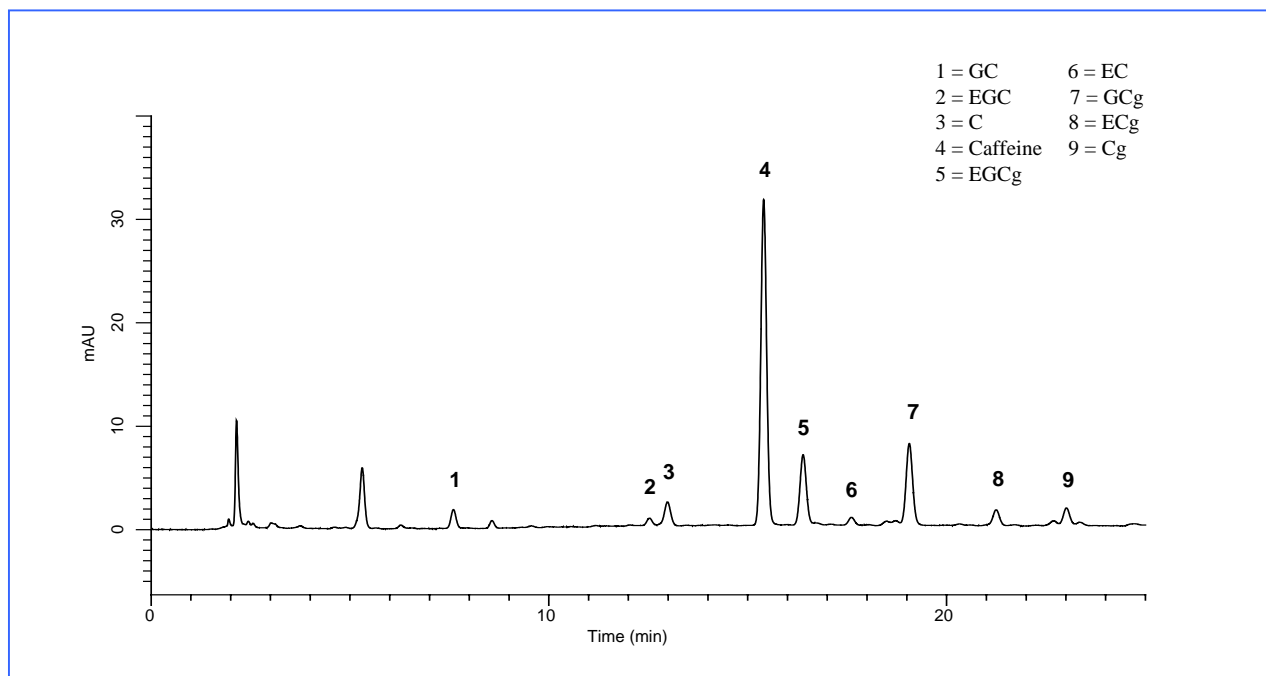


Analyses of catechins and caffeine in soft drink samples

Green tea in PET bottle

<Sample pretreatment>

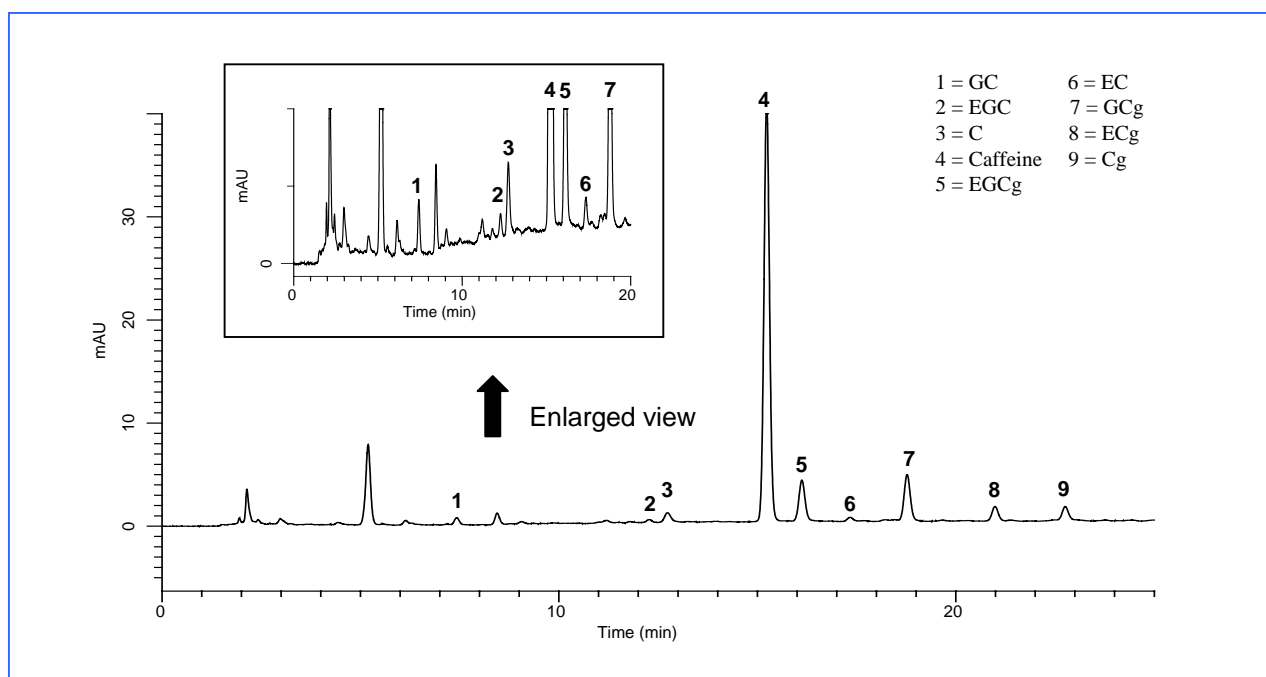
The sample was filtrated with 0.45 μ m-membrane filter (GL CHROMATO DISK) and 10-fold diluted with water.



Oolong tea in PET bottle

<Sample pretreatment>

The sample was filtrated with 0.45 μ m-membrane filter (GL CHROMATO DISK) and 10-fold diluted with water.

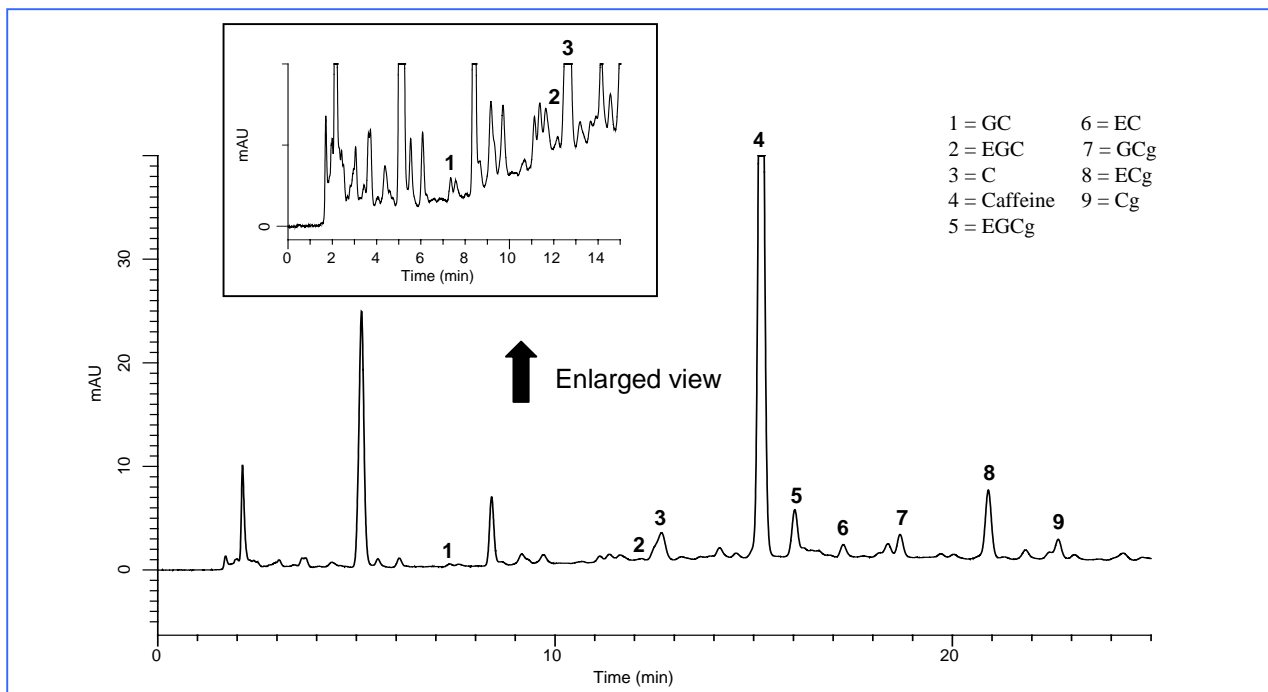


Analyses of catechins and caffeine in soft drink samples

Black tea (straight) in PET bottle

< Sample pretreatment >

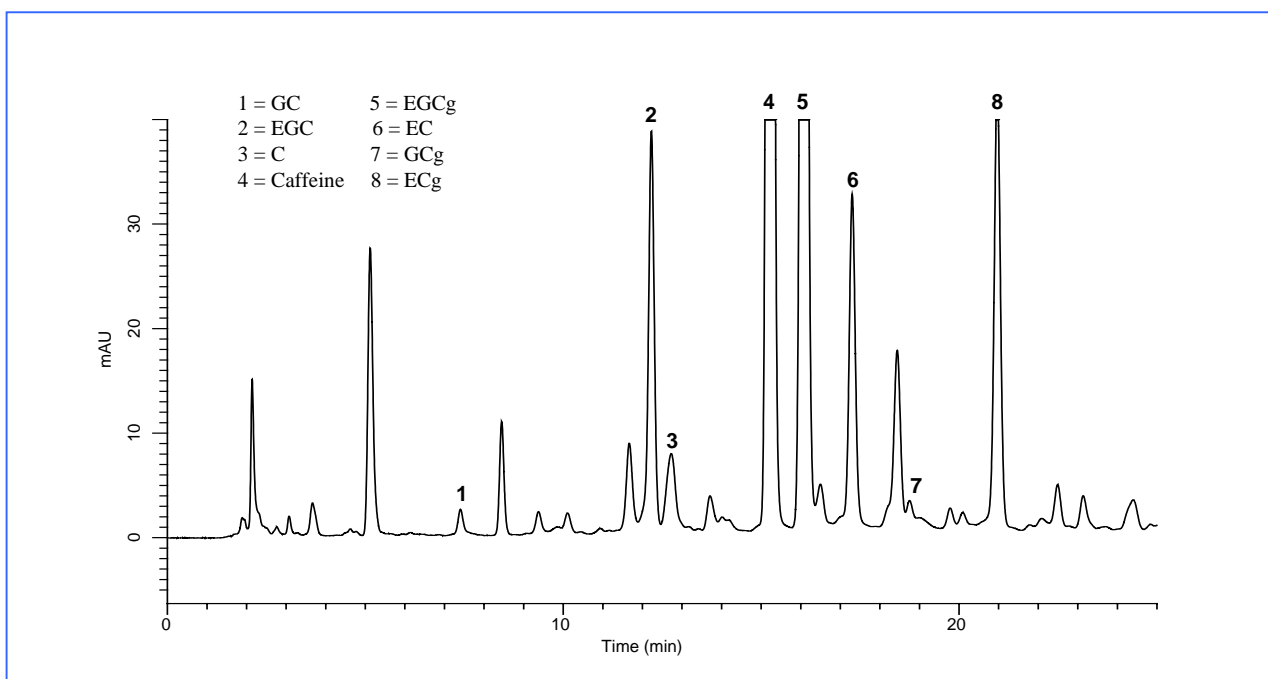
The sample was filtrated with 0.45 μ m-membrane filter (GL CHROMATO DISK) and 5-fold diluted with water.



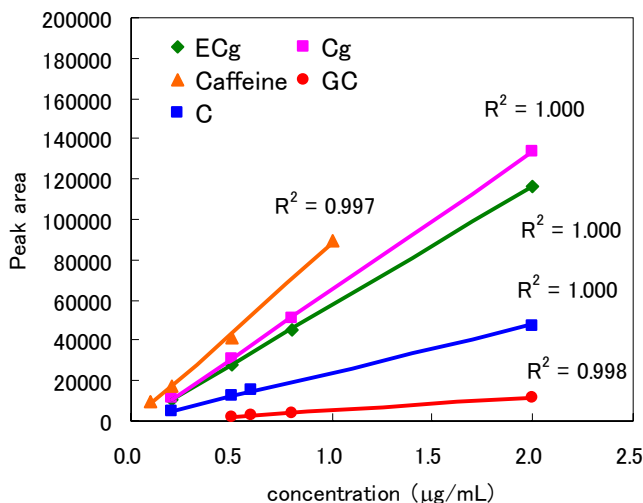
Extract from tea leaves

< Sample pretreatment >

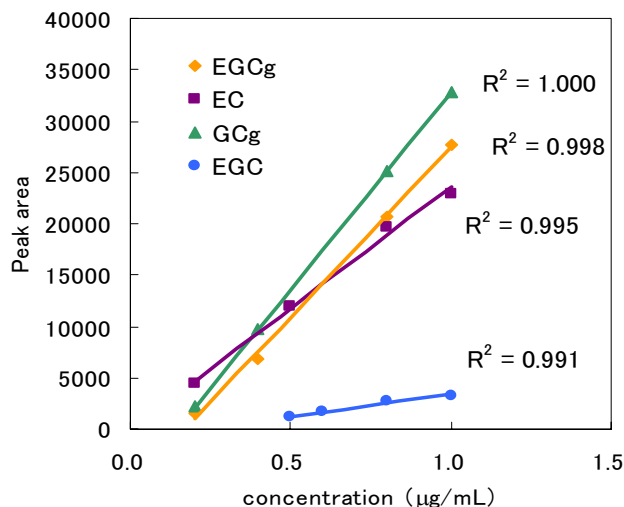
To 5.0 g of tea leaves, 50 mL of boiled water was added. After waiting for 5.0 min, the solution was filtrated with 0.45 μ m-membrane filter (GL CHROMATO DISK) and 10-fold diluted with water.



Calibration curves (8 catechins and caffeine)



Calibration curves (ECg, Cg, Caffeine, GC, C)



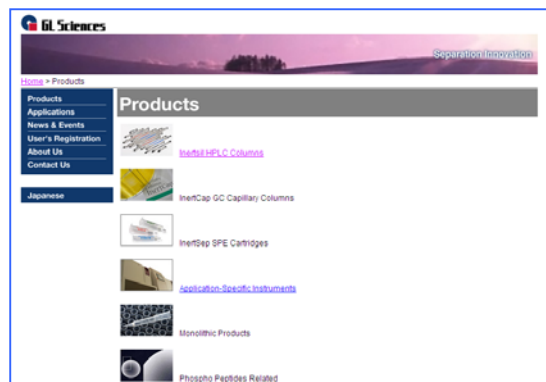
Calibration curves (EGCg, EC, GCg, EGC)

Visit our Website on

<http://www.glsciences.com/>

<http://www.inertsil.com/>

GL Sciences also offers an extensive range of GC and LC consumables.



Contact us

GL Sciences, Inc. Japan

22-1 Nishishinjuku 6-chome, Shinjuku-ku, Tokyo, 163-1130 Japan

TEL: +81-3 (5323)6620 FAX: +81-3 (5323)6621

GL Sciences, Inc. USA

4733 Torrance Blvd. Ste 255, Torrance, CA 90503

Tel: (310)265-4424 FAX (310)265-4425

Distributors Outside of Japan and USA

GL Sciences uses distributors in many countries.

You can find a local distributor in your country in the following url.

<http://www.glsciences.com/products/contact.html>

E-MAIL: world@glsc.co.jp

